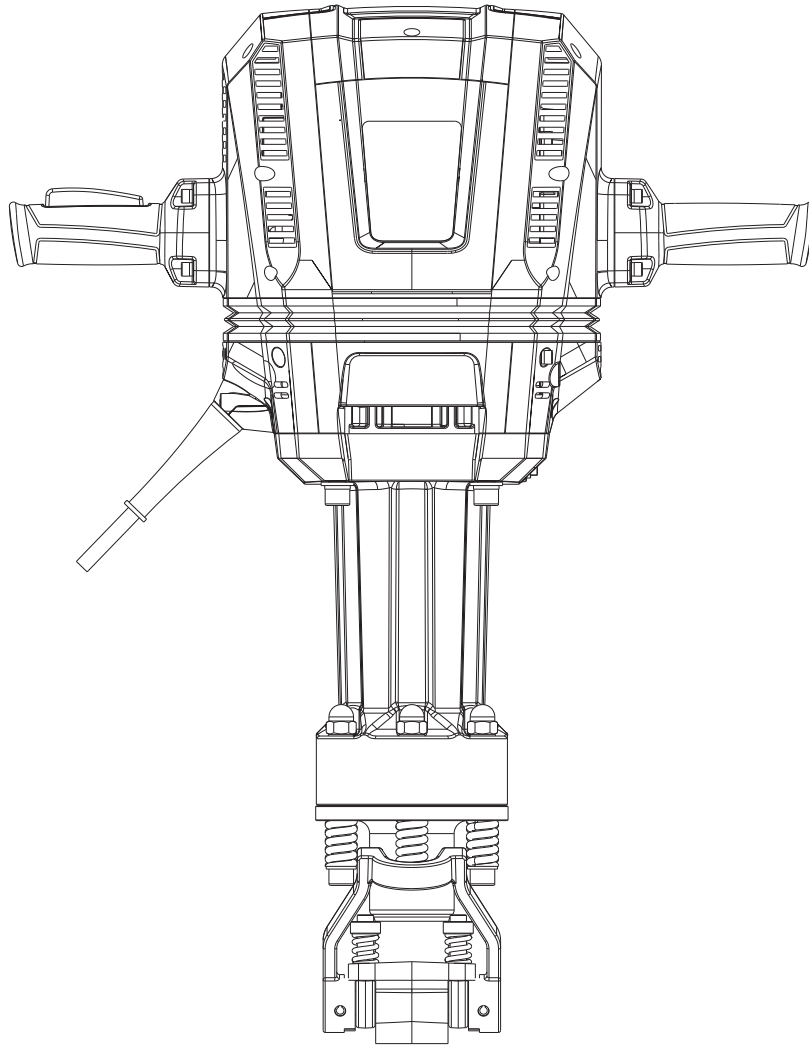


Model: TBREAK050

DEMOLITION BREAKER



OPERATING INSTRUCTIONS / USER MANUAL



Please read this manual carefully before use. Retain it for future reference. Failure to follow safety instructions may result in injury or product damage.



E&OE Please Note that details and specifications contained herein, are correct at the time of publishing. Adendorff reserve the right to change specifications at any time without prior notification.

TABLE OF CONTENTS

Introduction	2
Technical Details & Specifications	3
Package Contents	4
Safety Warnings	5
PPE Requirements	7
Operating Environment Requirements	7
Assembly Setup	7
Operating Instructions	8
Maintenance & Service Intervals	9
Troubleshooting	10
Disposal Guidelines	11
Storage Instructions	12
Optional Accessories	12
Parts List	13
Certifications & Compliance	14
Customer Support - Repairs and Warranty	15
Service & Repair Contact Instructions	16
Environmental Statement	16

WELCOME TO THE ADENDORFF FAMILY!

We are delighted to have you with us. To ensure you get the best performance from your new product, we kindly advise you to read the instruction manual thoroughly before installation and use. This will help you maximize its potential and ensure a smooth and safe experience.

Thank you for choosing our product. We appreciate your trust and support, and we are confident that it will serve you well. Should you have any questions or require further assistance, please feel free to reach out to us.

IMPORTANT: Please store and save this manual in a safe, dry place for future reference. It contains essential safety, maintenance, and troubleshooting information that may be needed during the product's lifetime.

TECHNICAL DETAILS & SPECIFICATIONS

SPECIFICATION	VALUE
MODEL:	TBREAK050
	Z6G-DW-50C-1
TYPE:	Electric Demolition Breaker
RATED VOLTAGE:	220–240V AC
RATED FREQUENCY:	50Hz
RATED INPUT POWER:	2200W
IMPACT RATE:	1100 blows per minute (min. ⁻¹)
IMPACT ENERGY:	70 joules
WEIGHT (WITHOUT ACCESSORIES):	29kg
DEGREE OF PROTECTION AND INSULATION CLASS:	Class II (Double Insulated)
COOLING METHOD:	Fan-cooled motor housing
VIBRATION LEVEL (CHISELLING):	ah, Cheq = 20 m/s ² ; Uncertainty K = 1.5 m/s ²
SOUND PRESSURE LEVEL (LPA):	95 dB(A), Uncertainty KpA = 3 dB(A)
SOUND POWER LEVEL (LWA):	103 dB(A), Uncertainty KwA = 3 dB(A)
GUARANTEED SOUND POWER LEVEL (DIRECTIVE 2000/14/EC):	LwA 105 dB(A)
OPERATING TEMPERATURE RANGE:	–10 °C to +40 °C
STORAGE TEMPERATURE:	–10 °C to +50 °C

PERFORMANCE NOTE

The declared vibration and sound values have been measured according to standard test methods and can be used to compare this tool with other models. The actual values during operation may differ depending on usage conditions and operator technique. Appropriate safety measures must be based on the actual conditions of use, including non-operating periods such as idle time.

DESIGN OVERVIEW:

The Demolition Breaker features a heavy-duty motor with reinforced gearing and a hammering mechanism designed for long service life. The soft-grip handles and rubberised anti-vibration mounts improve comfort and control during extended operation.

This power tool is intended for breaking, demolishing and planing of concrete, brick and rock surfaces. Use it only for its prescribed purpose. Any other use is considered misuse and may result in damage to the tool or personal injury.

The machine operates through high-frequency percussive impact energy transmitted through a chisel bit or similar attachment. It is suited for construction sites, civil engineering, and heavy-duty maintenance tasks. It should not be used as a drilling machine or for light decorative work.

Before first use, request a demonstration from a qualified operator to familiarise yourself with the controls and safety procedures.

The tool must not be operated in wet or damp environments and must never be used if the power cord is damaged. Always check that the mains voltage corresponds to the rating on the tool's nameplate (220–240 V AC, 50 Hz).

This manual provides essential information about safe use, maintenance, and service procedures to ensure reliable performance and compliance with Adendorff Machinery Mart standards.

PROPER USE

Operate the demolition breaker with both hands firmly on its handles and maintain a balanced stance. Only use original and approved accessories supplied or authorised by Adendorff Machinery Mart. Do not modify the tool or use non-approved bits or attachments.

IMPROPER USE AND LIMITATIONS

- Do not use the tool for drilling holes or cutting metal.
- Do not operate in explosive atmospheres or near flammable liquids or gases.
- Do not submerge the tool in water or use in rain.
- Do not carry the tool by the power cord or use the cord to disconnect it from the mains.
- Persons under 16 years of age are not permitted to operate this machine.

RESIDUAL RISKS

Even when used correctly, the tool cannot eliminate all risks. The following residual hazards may remain:

- Hearing damage if ear protection is not used.
- Respiratory damage from dust inhalation if a dust mask is not worn.
- Vibration-related injuries if the tool is used for extended periods without breaks.
- Electromagnetic interference with medical implants. Users with such devices must consult a physician and the implant manufacturer before operation.

PACKAGE CONTENTS

Unpack the tool carefully and check that all items are present. Report any missing or damaged parts immediately to your Adendorff Machinery Mart branch.

Standard package includes:

- 1 × Electric Demolition Breaker (Z6G-DW-50C-1)
- 2 × Soft side handle (auxiliary handle)
- 3 × Hexagonal chisel bit (28 mm)
- 4 × Dust protection cap (fitted)
- 5 × Oil cover screw (installed)
- 6 × Spanner (for maintenance access)
- 7 × Instruction manual (this document)
- 8 × Carrying case or crate (depending on package type)

BEFORE OPERATION:

- All packaging material has been removed.
- The ventilation slots are unobstructed.
- The tool housing and cord are free of damage.

SAFETY WARNINGS

WARNING!

Read and save all safety warnings and instructions carefully. Failure to follow these warnings may result in electric shock, fire, or serious injury. Keep all warnings and instructions for future reference.

GENERAL POWER TOOL SAFETY

- Read all safety warnings and instructions carefully before use. Failure to follow these warnings and instructions may result in electric shock, fire, or serious injury.
- Retain this manual for future reference.
- In all safety warnings, the term power tool refers to both mains-operated (corded) and battery-operated (cordless) tools.

WORK AREA SAFETY

- Keep work area clean and well lit. Cluttered or dark areas invite accidents.
- Do not operate power tools in explosive atmospheres such as near flammable liquids, gases, or dust. Sparks from the tool may ignite fumes.
- Keep bystanders, children, and animals away while operating. Distractions can cause loss of control.

ELECTRICAL SAFETY

- Ensure that the plug matches the outlet. Never modify the plug or use adapter plugs with earthed (grounded) tools.
- Avoid body contact with grounded surfaces, such as pipes, radiators, or metal structures.
- Do not expose the power tool to rain or wet conditions. Water entering the tool increases electric-shock risk.
- Do not abuse the power cord. Never use it for carrying, pulling, or unplugging the tool. Keep it away from heat, oil, sharp edges, and moving parts.
- Use extension cords suitable for outdoor use when operating outdoors.
- If operating in a damp location is unavoidable, supply the tool through a Residual Current Device (RCD).

PERSONAL SAFETY

- Stay alert and use common sense. Do not use the power tool while tired or under the influence of drugs, alcohol, or medication.
- Use personal protective equipment. Always wear eye protection.
- Prevent unintentional starting. Ensure the switch is OFF before connecting to power.
- Remove any adjusting key or wrench before turning on the tool.
- Maintain proper footing and balance.
- Do not wear loose clothing or jewellery. Keep long hair tied back.
- Keep handles clean and dry.
- If the tool is equipped for dust extraction, ensure proper connection and use.

POWER TOOL USE AND CARE

- Do not force the power tool. Use the correct tool for the application.
- Do not use the power tool if the switch does not operate properly.
- Disconnect from power before making adjustments or changing accessories.
- Store idle tools out of reach of children.
- Maintain tools regularly. Check for misalignment, binding, or damaged components before use.
- Keep cutting tools sharp and clean.
- Use accessories and bits according to manufacturer's recommendations.

SERVICE

- Have your power tool serviced by qualified technicians using only identical replacement parts. This ensures continued safety and reliability.

HAMMER-SPECIFIC SAFETY

- Wear hearing protection; prolonged exposure to noise may cause hearing loss.
- Use auxiliary handles provided with the tool to maintain control.
- Hold the power tool by insulated gripping surfaces when working where hidden wiring may be present. Contact with live wires could energise exposed metal parts.
- Always wear a dust mask when chiselling masonry or concrete.
- Keep a firm grip with both hands and maintain a secure stance.
- Avoid excessive pressure — the impact mechanism provides sufficient force.
- Allow regular rest intervals to minimise vibration exposure.

ADDITIONAL SPECIFIC WARNINGS

- If the power cable is damaged while working, disconnect the plug immediately. Never touch a damaged cable.
- Do not operate the tool in rain or damp environments.
- Disconnect the plug during breaks, when not in use, or while performing maintenance.
- Persons under 16 years of age are not permitted to operate this machine.
- Only use original Adendorff accessories.
- Always check for hidden electrical lines, gas, or water pipes before chiselling. Use a cable or metal detector.
- Maintain at least 1 m clearance from flammable materials during operation.

RESIDUAL RISKS

Even when operated correctly, the following hazards cannot be eliminated entirely:

- Lung damage from dust inhalation if a respirator is not worn.
- Hearing damage if ear protection is not used.
- Vibration-related injury during prolonged operation.
- Interference with medical implants due to electromagnetic fields.
- Risk of electric shock if the cable or insulation is damaged.

PPE REQUIREMENTS

Always wear the following protective equipment when operating the electric chisel:

- **Eye Protection:** Safety goggles or a face shield to guard against flying debris.
- **Hearing Protection:** Ear defenders or earplugs to reduce noise exposure.
- **Respiratory Protection:** Dust mask compliant with EN 149 (FFP2 or higher).
- **Hand Protection:** Heavy-duty gloves for vibration damping and grip stability.
- **Foot Protection:** Non-conductive, steel-toe safety footwear.
- **Clothing:** Close-fitting, long-sleeved, flame-resistant garments. Avoid loose clothing.
- **Head Protection:** Safety helmet if working overhead or in construction zones.

OPERATING ENVIRONMENT REQUIREMENTS

- Operate in dry, ventilated conditions only.
- Ambient temperature must remain between -10 °C and $+40\text{ °C}$.
- Do not use the tool in rain, wet conditions, or areas with high humidity.
- Keep work area clear of clutter, cables, and debris.
- Ensure proper lighting at all times.
- Maintain a clearance of at least 1 m around the operator for safe movement.
- Never operate near combustible materials or vapours.
- Arrange power cables safely behind the operator.
- Inspect walls and floors for hidden wires or pipes before chiselling.
- Keep bystanders and unauthorised persons at least 5 m away.
- Do not use the tool near sensitive electronic equipment unless adequately shielded, as electromagnetic fields may cause interference.

ASSEMBLY / SETUP

Before performing any assembly, disconnect the plug from the mains supply.

INSTALLING THE SOFT GRIP / AUXILIARY HANDLE

- Position the auxiliary handle over the front collar of the housing. Tighten the handle bolt until secure. The handle can be rotated around the barrel to achieve a comfortable working angle.

INSTALLING OR REMOVING THE BIT

This tool accepts hex-shank chisels either with or without a collar. Always verify that the bit is firmly retained before operation by attempting to pull it gently outward.

FOR BITS WITH A COLLAR:

1. Pivot the tool retainer downward approximately 60° .
2. Insert the bit into the tool holder until it stops.
3. Return the retainer to its original position to lock.

FOR BITS WITHOUT A COLLAR:

1. Pivot the tool retainer upward approximately 60°.
2. Face the notched portion of the bit upward.
3. Insert fully, then pivot the retainer further upward until it stops at the holder.

To remove a bit, reverse the above procedure.

CHECKING SWITCH OPERATION

Before connecting to the mains, press the switch lever several times to confirm it moves freely and returns automatically to the OFF position.

INDICATOR LAMPS

When the tool is connected and switched ON, the green indicator lamp lights to confirm normal operation. If the red indicator lamp illuminates, the tool requires service. Contact an authorised Adendorff Machinery Mart repair centre.

OPERATING INSTRUCTIONS

STARTING AND STOPPING

1. Starting and Stopping
2. Connect the plug to a power outlet matching the rated voltage.
3. Hold the tool firmly with both hands.
4. Press the switch lever to start. Release to stop.

Do not start the tool while the chisel is pressed hard against the work surface. Allow the mechanism to build impact energy first.

CHISELLING AND DEMOLITION

- Hold the tool with both hands and maintain steady, moderate pressure—let the hammer action perform the work.
- Excessive force will not increase efficiency and may shorten tool life.
- When operating on a vertical surface, brace your stance securely to maintain balance.
- Avoid side pressure on the bit; this may bend or seize it.
- When breaking thick concrete, start near the edge and work inward in sections.

OPERATING IN COLD CONDITIONS

If the tool has been unused for a long time or exposed to low temperatures, allow it to run idle for three to five minutes before applying load. This warms the internal lubricant and ensures smooth impact operation.

PREVENTING REBOUND AND OIL SPRAY

Some residual oil between the bit and cylinder box may be expelled when the tool starts. Protect surrounding surfaces with newspapers or drop cloths when working indoors.

SHUTDOWN AND DISCONNECTION

After use, release the switch lever, wait for complete stop, and disconnect the plug from the socket. Always remove the plug before performing any adjustments or maintenance.

GENERAL WORK PRACTICES

- Ensure the power cable is directed to the rear of the machine and away from debris.
- Do not carry the machine by the cable.
- During pauses or when unattended, disconnect from the power source.
- Never allow the machine to remain idling on the ground or bench.

HIDDEN UTILITIES

Before chiselling, inspect the work surface for concealed wiring, gas, or water pipes. Use a detector to identify hazards before beginning demolition.

MAINTENANCE & SERVICE INTERVALS

Disconnect the plug from the mains before carrying out any maintenance or adjustment.

Regular maintenance is essential for safe operation and long service life. The demolition breaker has been factory-lubricated and tested; however, periodic inspection and re-lubrication are necessary under normal working conditions.

ROUTINE MAINTENANCE

- Inspect the tool daily for damage, loose fasteners, or excessive wear.
- Clean the exterior surfaces and vents using a dry cloth or compressed air. Do not use solvents or flammable cleaning fluids.
- Ensure the handles are free from oil, grease, or dust buildup.
- Examine the power cord and plug before each use; replace immediately if damaged.
- Check that the auxiliary handle and chisel retainer operate smoothly.
- Verify that the dust protection cap is intact and seated correctly.

REPLACING THE DUST PROTECTION CAP

The dust protection cap prevents debris from entering the tool holder. If damaged, replace it promptly:

1. Pull the locking sleeve back.
2. Slide the new cap over the tool holder until seated firmly.
3. Release the sleeve to secure it.

LUBRICATION

The tool is pre-lubricated at the factory and ready for immediate use. Re-lubrication is required after approximately 60 hours of operation, or whenever performance noticeably decreases.

Lubrication procedure:

1. Disconnect the tool from the mains.
2. Remove the oil cover screw using the supplied spanner.
3. Clean away old grease.
4. Refill with 30 g of Adendorff Machinery Mart–approved gear grease.
5. Refit the oil cover securely before resuming operation.

Note:

Do not exceed 30 g of grease. Over-lubrication may cause malfunction. Use only Adendorff Machinery Mart–approved lubricants; substitutes may damage internal seals.

SERVICE INTERVALS

UNDER NORMAL OPERATING CONDITIONS:

- **Daily:** Inspect cord, plug, and housing; clean vents.
- **Weekly:** Check retainer, handle, and indicator lamp function.
- **Every 60 hours:** Perform lubrication and general inspection.
- **Annually:** Have the tool serviced by an authorised Adendorff Machinery Mart repair centre.

Only trained technicians should open the housing or perform internal repairs. Use of non-genuine parts will void the warranty.

TROUBLESHOOTING

If the tool fails to operate correctly, refer to the following guide before contacting an authorised Adendorff Machinery Mart Service Centre.

Always disconnect the plug from the mains before inspecting or adjusting the tool.

SYMPTOM:	POSSIBLE CAUSES:	REMEDY:
Tool does not start	<ul style="list-style-type: none"> • Power plug not connected or outlet faulty. • Switch lever defective. • Power supply below rated voltage. • Internal fuse or wiring fault. 	<ul style="list-style-type: none"> • Check mains connection and verify outlet function. • Test using a different socket. • Contact Adendorff authorised service if internal wiring or switch is faulty.
Indicator lamp glows red	<ul style="list-style-type: none"> • Overload or motor overheating. • Internal service required. 	<ul style="list-style-type: none"> • Allow tool to cool for 15 minutes. • If the red light remains on, send the tool for inspection.
Reduced impact force or low output	<ul style="list-style-type: none"> • Insufficient lubrication. • Bit not fully seated or worn. • Piston or seal wear. 	<ul style="list-style-type: none"> • Apply 30g of Adendorff-approved lubricant. • Check and reinsert chisel bit. • Replace worn seals through authorised service.

SYMPTOM:	POSSIBLE CAUSES:	REMEDY:
Overheating	<ul style="list-style-type: none"> • Blocked ventilation slots. • Extended continuous operation or overload. 	<ul style="list-style-type: none"> • Clean vents with compressed air. • Allow tool to cool down for 15 minutes before reuse.
Abnormal noise or vibration	<ul style="list-style-type: none"> • Loose fasteners. • Worn chisel or internal component. 	<ul style="list-style-type: none"> • Tighten all external screws and bolts. • Replace chisel if damaged. • If noise persists, service by authorised centre.
Oil leakage	<ul style="list-style-type: none"> • Excess lubricant in gear housing. • Worn oil seals. 	<ul style="list-style-type: none"> • Wipe excess grease. • Replace seals at service centre.
Tool runs intermittently	<ul style="list-style-type: none"> • Carbon brushes worn or sticking. • Damaged power cord. 	<ul style="list-style-type: none"> • Have brushes inspected or replaced by an authorised technician. • Replace defective cord immediately.

DISPOSAL GUIDELINES

This product contains valuable materials that can be recycled. Do not dispose of it with general household waste. Comply with local environmental regulations for safe disposal and recycling of electrical tools.

RECYCLING GUIDELINES:

- Deliver the tool to an authorised e-waste collection facility or Adendorff Machinery Mart branch for safe disposal.
- Metal components are recyclable.
- Plastic housings and rubber parts should be disposed of as industrial waste.
- Cables and wiring may be recycled through metal recovery systems.
- Lubricants and greases must be handled as hazardous waste according to local environmental regulations.

Do not incinerate the tool or dump it in landfill. Responsible disposal conserves resources and protects the environment.

Always erase any personal data stored in smart tools and ensure components are safely handled to prevent environmental contamination or injury.

STORAGE INSTRUCTIONS

- Store the tool in a clean, dry place away from moisture and direct sunlight.
- Ambient storage temperature should be between $-10\text{ }^{\circ}\text{C}$ and $+40\text{ }^{\circ}\text{C}$.
- If storing for long periods, apply a light protective oil to metal parts and operate briefly before next use to circulate lubricant.
- Keep the tool out of reach of children and untrained persons.

OPTIONAL ACCESSORIES

The following accessories and replacement parts are approved for use with the Adendorff Machinery Mart Demolition Breaker:

- Replacement 28 mm hex chisels (flat, pointed, scaling, spade, and tile types).
- Heavy-duty carrying case.
- Replacement dust protection caps.
- Replacement auxiliary handle and bolts.
- Approved gear lubricant (30 g tube).
- Electrical cord and plug set (authorised replacement only).
- Extension leads rated 230 V, 16 A minimum, outdoor type.

Important:

Use only Adendorff Machinery Mart–approved accessories and parts. Non-genuine components may reduce safety, affect performance, or void the warranty.

PARTS LIST

The main components are listed for identification and authorised servicing only. Replacement parts must be genuine Adendorff Machinery Mart items fitted by qualified personnel.

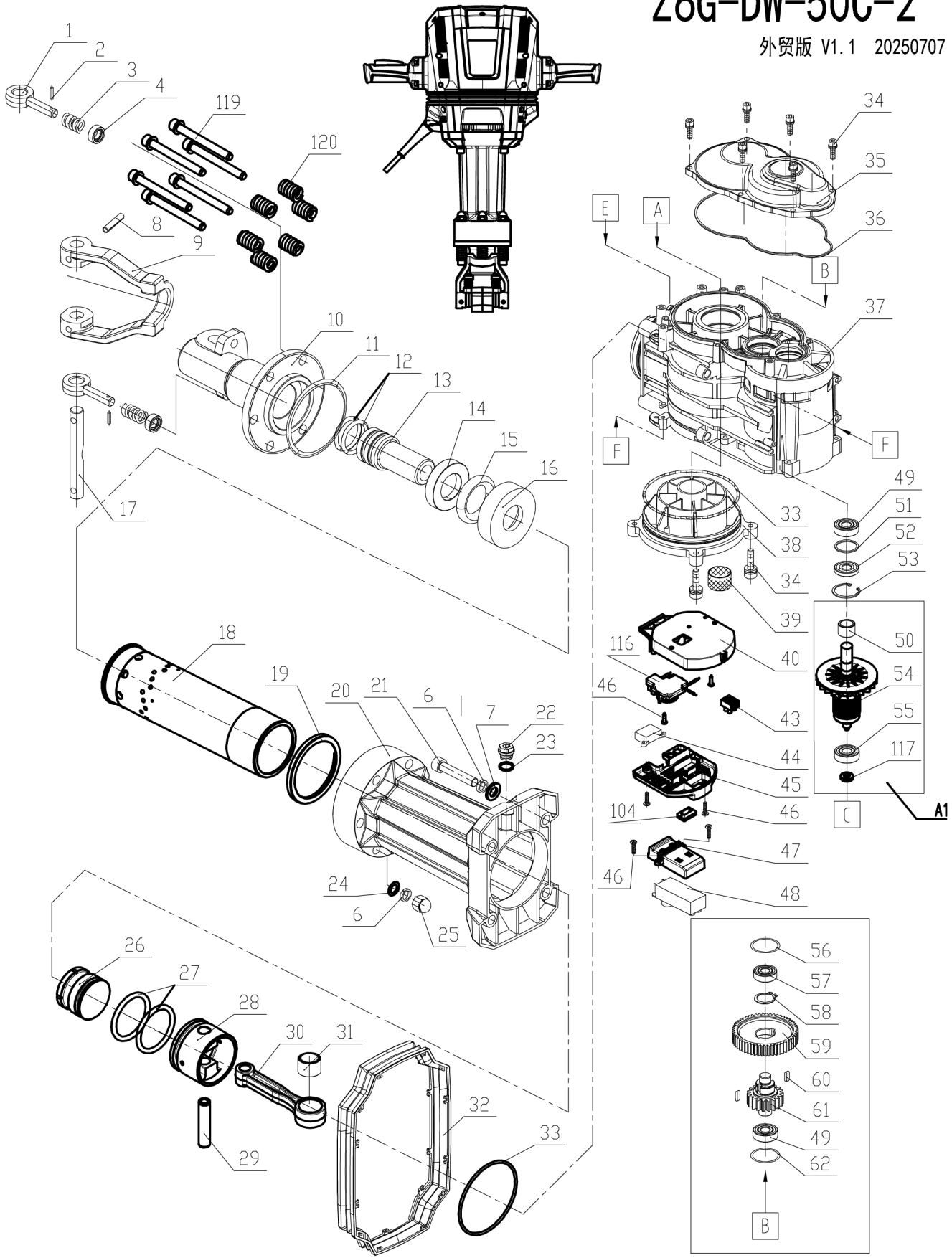
MAJOR COMPONENTS

Soft grip handle
Auxiliary handle bolt
Switch lever
Indicator lamp assembly (green and red LEDs)
Housing cover
Oil cover and filler port
Tool retainer
Tool holder
Bit (collared or non-collared type)
Cylinder case
Piston assembly
Crankshaft assembly
Gear housing
Dust protection cap
Power cord with plug
Carbon brush set
Ventilation fan
Main motor housing
Label plate

For full diagram with part numbers, consult the separate parts sheet supplied or request the latest version from your Adendorff branch.

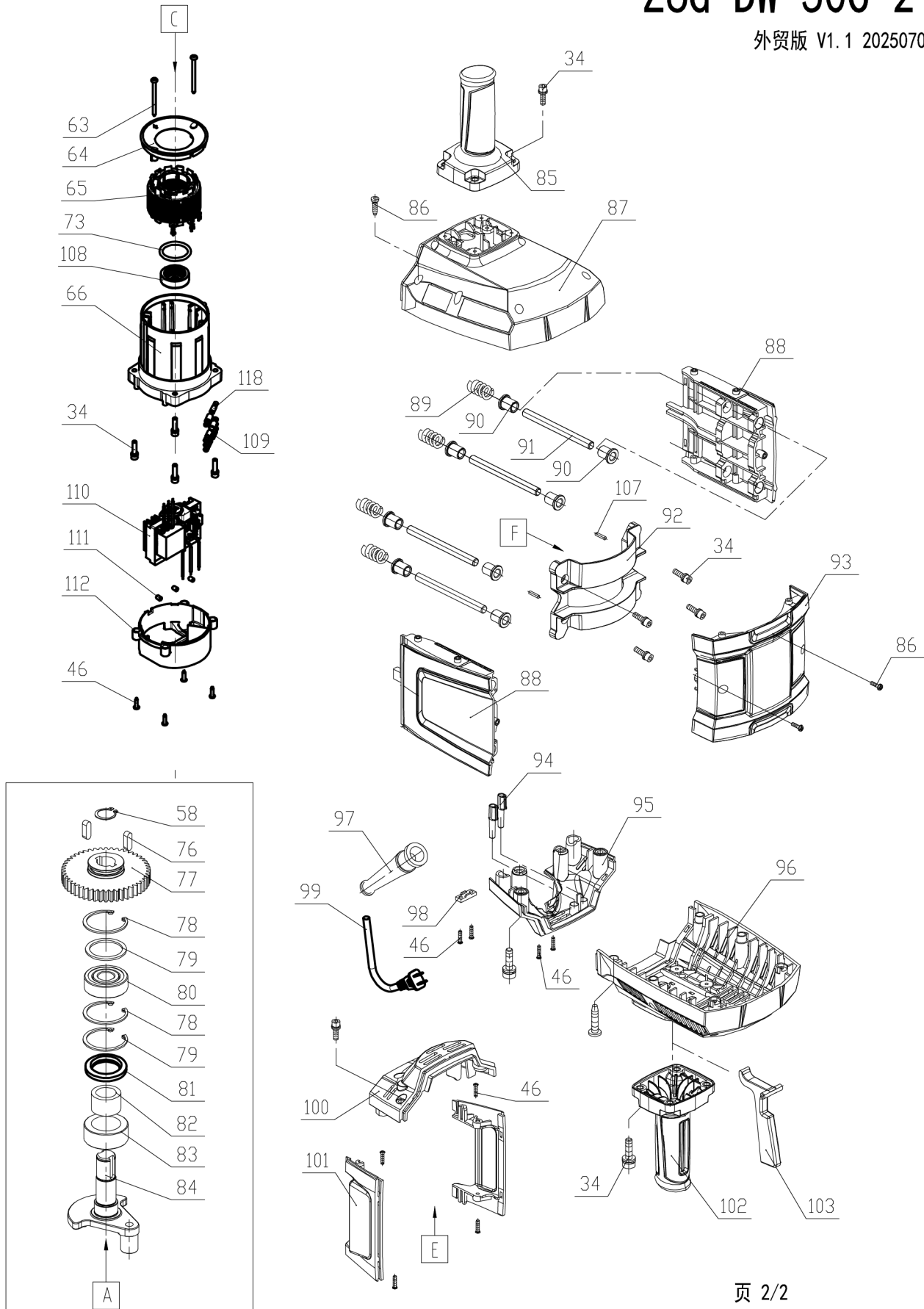
Z6G-DW-50C-2

外贸版 V1.1 20250707



Z6G-DW-50C-2

外贸版 V1.1 20250707



CERTIFICATION AND COMPLIANCE

CERTIFICATIONS & COMPLIANCE

The Electric Demolition Breaker Z6G-DW-50C-1 complies with the following international and South African standards for safety, performance, and electromagnetic compatibility:

- **Applicable Directives and Standards:**
- **IEC 62841-1: Electric Motor-Operated Hand-Held Tools – General Requirements**
- **IEC 62841-5-6: Particular Requirements for Hammers**
- **EN 55014-1: Electromagnetic Compatibility – Emission Requirements**
- **EN 55014-2: Electromagnetic Compatibility – Immunity Requirements**
- **IEC 61000-3-2: Harmonic Current Emissions**
- **IEC 61000-3-3: Voltage Fluctuations and Flicker**
- **SANS 62841-1 / SANS 62841-5-6**
- **Adendorff Electrical Equipment Safety Code 2025**

DECLARATION OF CONFORMITY

Adendorff Machinery Mart (Pty) Ltd. hereby declares that the Electric Demolition Breaker, Model Z6G-DW-50C-1, complies with the essential safety and health requirements of the above standards.

This product has been manufactured under a certified quality management system and inspected according to Adendorff Machinery Mart procedures.

CONFORMITY ASSESSMENT BODY:

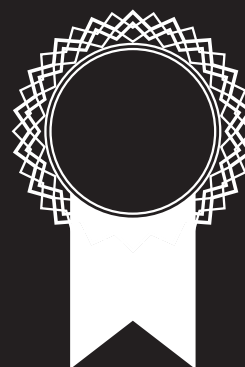
Intertek Industry Services – PER 004 (RSA AIA)

Markings on Tool:

- CE Mark (EU compliance)
- SANS Conformance Mark
- Double Insulation Symbol
- Waste Electrical and Electronic Equipment (WEEE) Symbol
- Adendorff Machinery Mart Product Code Label

ENVIRONMENTAL STATEMENT

This tool is designed in accordance with environmental protection principles. At the end of its service life, it must not be disposed of with general household waste. Please deliver it to an authorised recycling centre for proper material recovery.



CUSTOMER SUPPORT – REPAIRS & WARRANTY

WARRANTY PERIOD

- This product is warranted for 12 months from the date of purchase by the first user.

COVERAGE

- The warranty covers all material or production flaws, with exceptions:
- Batteries and chargers
- Parts subject to normal wear (e.g., bearings, brushes, cables, plugs)
- Accessories (e.g., drill bits, saw blades)

EXCLUSIONS

The warranty does not cover damage or defects from:

- Maltreatment, accidents, or alterations
- Inappropriate or negligent use of the tool
- Overloading, fluid permeation, excessive dust, or intentional damage
- Non-compliance with manual instructions, inexperienced assembly, lightning, or incorrect voltage

LIABILITY

- Adendorff Machinery Mart disclaims liability for bodily injury resulting from improper tool use.

REPAIRS

- All Warranty repairs must be conducted by an authorized Adendorff Machinery Mart repair center. All stores have in-house service technicians.

TRANSPORTATION COSTS

- Transportation costs for service are the customer's responsibility unless otherwise agreed in writing.

WARRANTY CLAIMS

- All Warranty claims do not extend or restart the warranty period.
- Claims may be rejected if purchase cannot be verified or if product maintenance is found to be lacking.
- A 3-month (Three Months) warranty applies to any repairs performed.

MAINTENANCE AND PROOF OF PURCHASE

- Maintain the product as instructed (e.g., clean ventilation slots, service carbon brushes regularly).
- Retain the purchase receipt as proof of purchase date.

SERVICE & REPAIR CONTACT INSTRUCTIONS

RETURN CONDITIONS

- Return the product intact, in clean condition, and in its original blow-molded case (if applicable), along with proof of purchase.

1. LOCATE YOUR NEAREST BRANCH

Visit our website at www.adendorff.co.za and use the Store Locator to find the nearest branch to you.

2. PREPARE PRODUCT DETAILS

Before contacting or visiting a branch, please have the following information ready:

- Product name and model number
- Proof of purchase (invoice or receipt)
- A brief description of the issue or fault

3. CONTACT OR VISIT THE BRANCH

Phone: Call your nearest Adendorff Machinery Mart branch directly for repair intake or service queries.

In Person: Bring the product to the branch for assessment. Ensure it is clean and safely packed for transport.

4. WARRANTY REPAIRS

If your item is still under warranty, repairs will be handled according to the warranty terms. Ensure you bring the original receipt with the product.

5. OUT-OF-WARRANTY REPAIRS

For items no longer under warranty, a quotation will be provided for approval before any work begins. **Note:** Repairs may take several business days depending on parts availability and workshop load. You will be contacted once your item is ready for collection.

For full warranty details, visit www.adendorff.co.za. For assistance, contact the national call centre at 011 434 7000.

ENVIRONMENTAL STATEMENT

Recycle raw materials whenever possible. Do not dispose of this product with household waste. Adendorff Machinery Mart encourages environmentally responsible recycling of machines, accessories, and packaging. Plastic components are labelled for categorised recycling, and all printed materials use chlorine-free paper.



SUPPLIED BY



www.adendorff.co.za